

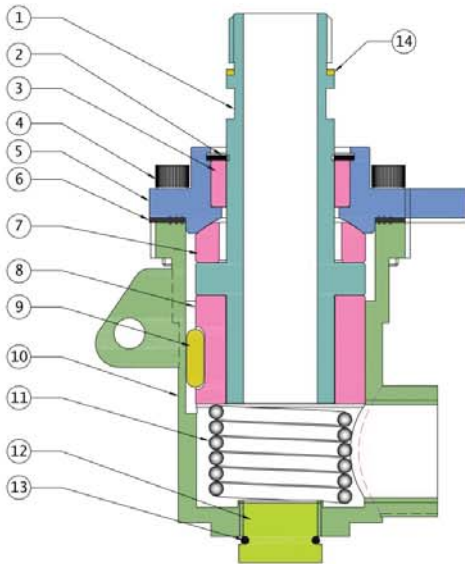
Thermic Fluid Roto Seal Coupling

Features

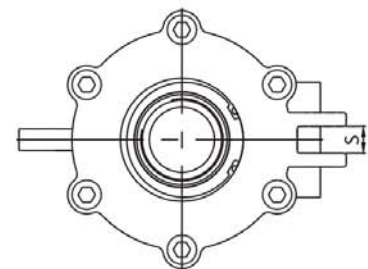
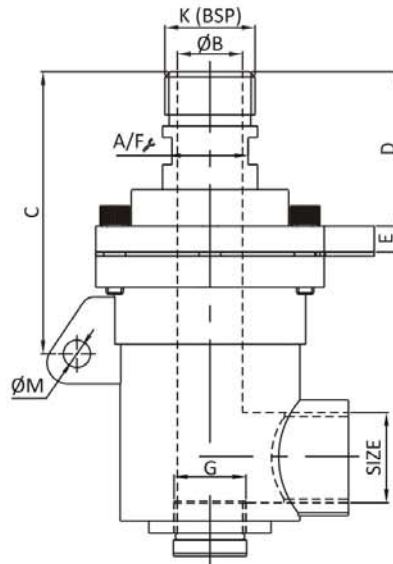
- ▶ Dual Flow Design
- ▶ Self Supported Rotating Union
- ▶ Spherical Carbon Graphite Seal
- ▶ Seal Wear Indicator allows prevent maintenance

Technical Specification

Model	ARH
Size	3/4", 1", 1.1/4", 1.1/2" & 2"
Pressure	Upto 10 Kg/cm ²
Temperature	Upto 350 °C
Leakage	Bubble Tight
RPM	300 Max.
Media	Thermic Fluid



No.	Part Name	Material
1	Shaft	S. Steel
2	Ciclip Housing	S. Steel
3	Cover Ring	Carbon
4	Screw	S. Steel
5	Cover	WCB
6	Gasket	C. A. F.
7	Seal Ring	Carbon CFT
8	Bush	Carbon
9	Lock Key	Hardchrome Plated
10	Body	WCB
11	Spring	S. S. 304
12	Plug	S. S. 304
13	Packing	CAF
14	Washer	Copper



Dimensions :

(All Dimensions are in mm)

MODEL	SIZE	K (BSP) RH / LH	G	A/F	ØB	C	D	E	S	ØM	Weight (Kg.) Approx.
ARH - 20	3/4"	3/4"	1/2"	30	19	105	57	09	9.7	10	2.800
ARH - 25	1"	1"	3/4"	30	24	105	57	09	9.7	10	2.750
ARH - 32	1.1/4"	1.1/4"	1"	44	32	165	90	15	17	10	9.500
ARH - 40	1.1/2"	1.1/2"	1.1/4"	44	34	165	90	15	17	10	9.450
ARH - 50	2"	2"	1.1/4"	59	44	168	92	16	17	13.8	15.200